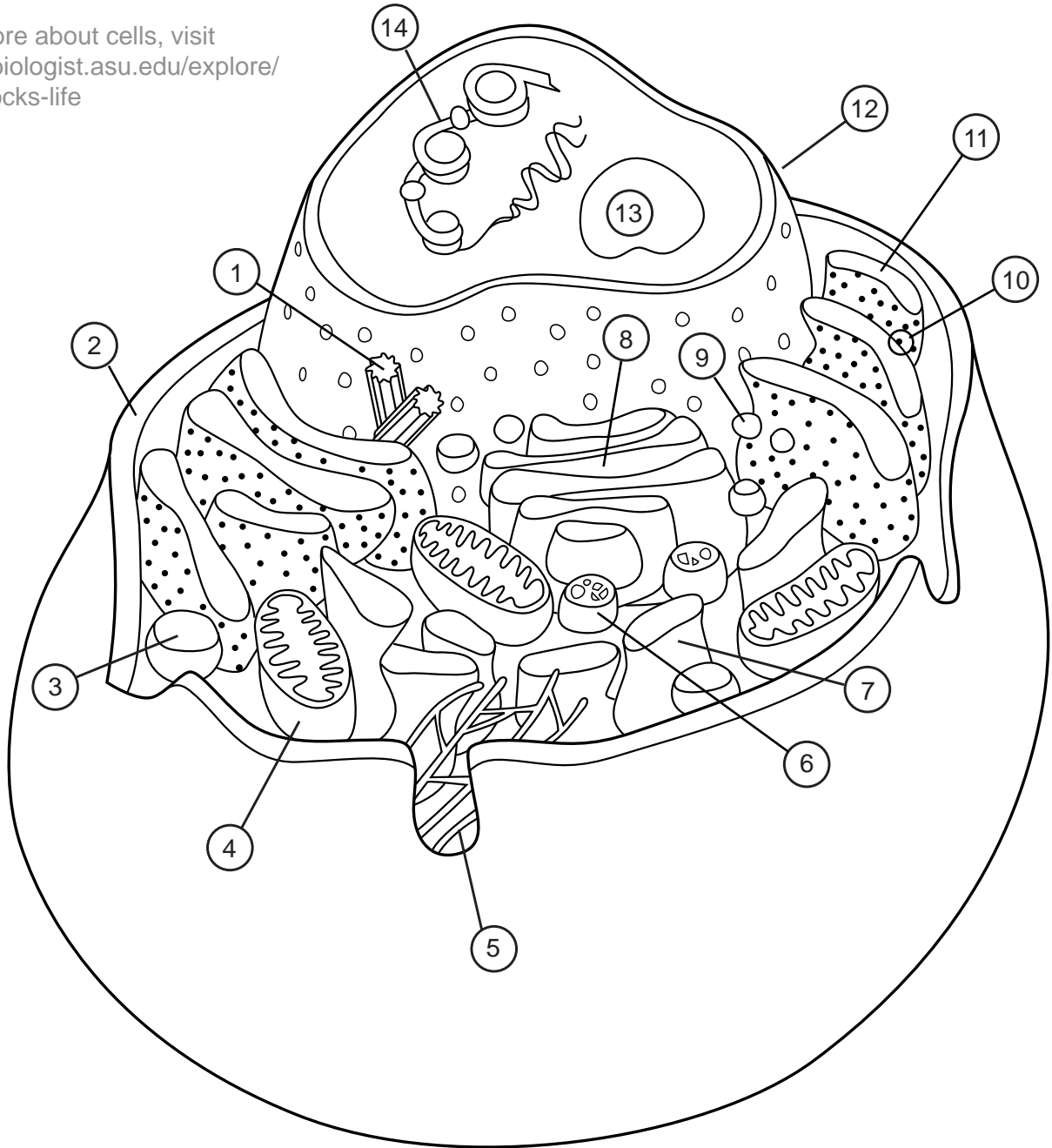


The average adult human has between 60 and 90 trillion cells!

To learn more about cells, visit <http://askabiologist.asu.edu/explore/building-blocks-life>



Color and label parts:

1. _____
2. _____
3. _____
4. _____
5. _____
6. _____
7. _____

8. _____
9. _____
10. _____
11. _____
12. _____
13. _____
14. _____

Animal Cell Anatomy Activity Key

1. Centrioles
2. Plasma membrane
3. Peroxisomes
4. Mitochondria
5. Cytoskeleton
6. Lysosomes
7. Smooth endoplasmic reticulum
8. Golgi apparatus
9. Vesicles
10. Ribosomes
11. Rough endoplasmic reticulum
12. Nucleus
13. Nucleolus
14. DNA